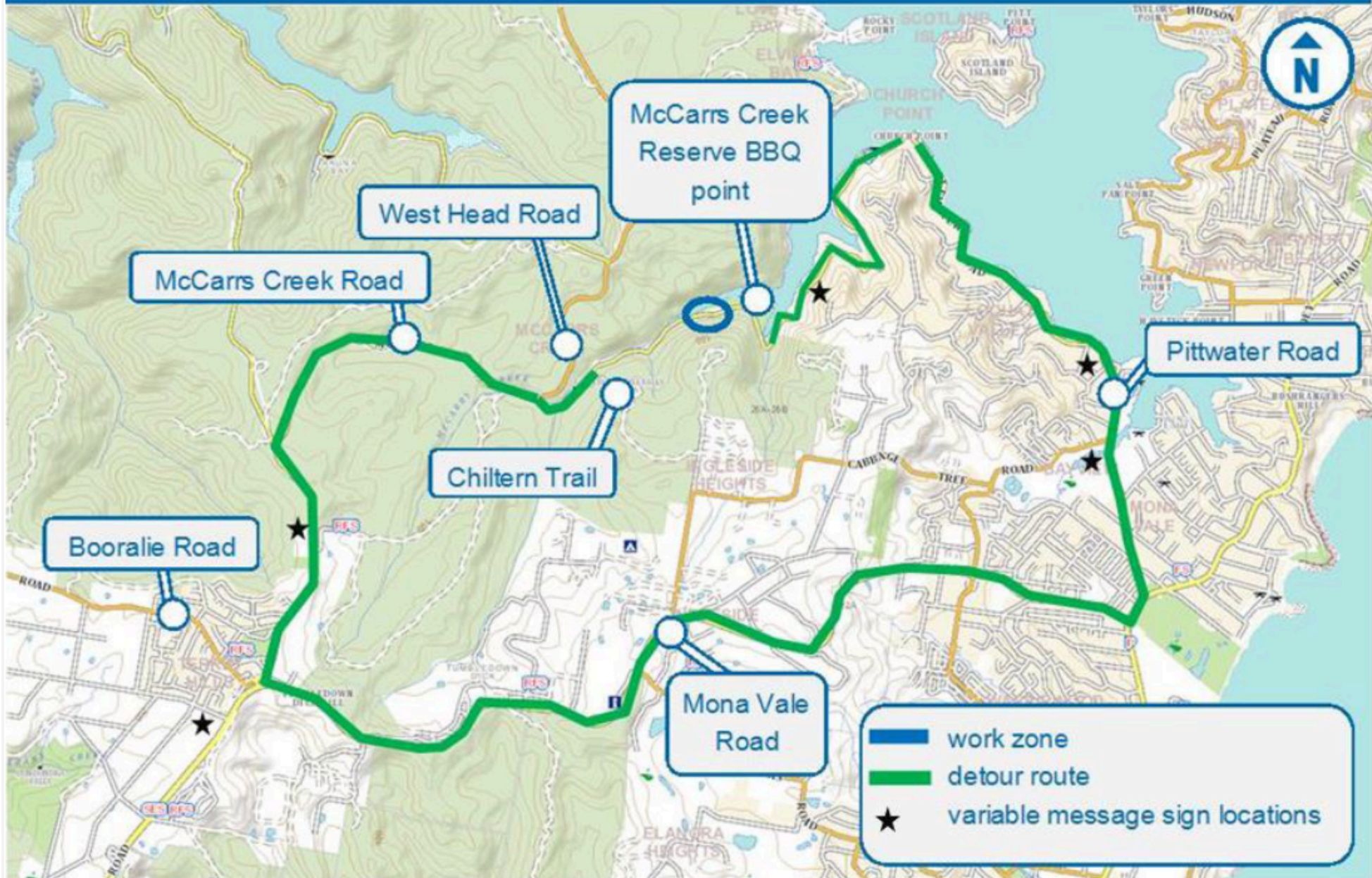


# Road closure – McCarrs Creek Road from Wednesday 14 June

Location of work on McCarrs Creek Road, Ku-ring-gai Chase National Park, Church Point



The NSW Government is funding this essential maintenance work under its \$1.5 billion program to maintain and improve the 18,028 kilometre state road network.

Roads and Maritime Services is stabilising the slope on McCarrs Creek Road, 900 metres west of McCarrs Creek Reserve.

We carried out investigation work in January 2017 to help us develop the preferred solution. We will now return to complete the stabilisation work. We have included a map to show the location of the work and detour route.

#### Our work schedule

This work will take **six night shifts** and **30 day shifts** from **Wednesday 14 June to Friday 25 August**. Our **night work hours** will be between **7pm** and **6am** and our **day work hours** will be between **7am** and **6pm** from **Monday to Friday**, excluding public holidays, weather permitting.

#### How will the work affect you?

There will be some noise associated with this work. We will make every effort to minimise its impact, including completing the noisier activities by **11pm**.

#### Traffic changes

Part of this work will result in a full road closure, this will affect travel times. McCarrs Creek Road will be closed for up to **20 day shifts** and up to **six night shifts** with **no access between Chiltern Trail and McCarrs Creek Reserve BBQ point**.

The **day road closure times** will be between **10am** and **3pm** and the **night road closure times** will be between **8pm** and **5am** from **Monday to Friday**. The road will be fully open with temporary traffic controls outside these times.

Variable message signs have been installed along the detour route that will update motorists with specific dates for upcoming closures.

Motorists will need to divert onto Mona Vale Road at Terrey Hills and Pittwater Road in Mona Vale to access Church Point. The detour for motorists traveling in either direction will add up to 30 minutes to travel times.

Please keep to speed limits and follow the direction of traffic controllers and signs.

For the latest traffic updates, you can call 132 701, visit [livetraffic.com](http://livetraffic.com) or download the [Live Traffic NSW App](#).

#### Contact

If you have any questions, please contact our delivery partner Downer Mouchel, on [1800 332 660](tel:1800332660) or [nsw\\_projects@downermouchel.com](mailto:nsw_projects@downermouchel.com).

For more information on our projects, visit [rms.nsw.gov.au](http://rms.nsw.gov.au).

Thank you for your patience during this important work.



**Roads &  
Maritime**

See more at: <http://www.westpittwater.com.au/BaysNews#sthash.siqjFS7r.dpuf>